

ELM900x CMOS White LED flashlight driver

■ General description

ELM900x is CMOS white LED flashlight driver. This series can drive two series connected white LED by 1.5V~3.0V input voltage. ELM900 series uses an external inductor as voltage booster and consists of an oscillator circuit and a driving transistor. The input DC power is transformed to constant current pulse when the external inductor is switched on and repeatedly at the frequency : 35kHz, 55kHz.

■ Features

- Low noise : 35kHz, 55kHz
(constant frequency switching)
- Constant average power control
- High efficiency
- Package : SOT-89

■ Application

- White LED flashlight
- Laser pointer
- LCD backlighting

■ Maximum absolute ratings

Parameter	Symbol	Limit	Unit
Max.voltage (Vdd~Vss)	Vdd	12	V
Max.voltage (LX~Vss)	Vlx	12	V
Max.current LX	Ilx	200	mA
Power dissipation	Pd	300	mW
Operating temperature	Top	-20~+70	°C
Storage temperature	Tstg	-55~+125	°C

■ Selection guide

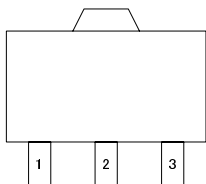
ELM900x-x

Symbol		
a	Switching frequency	B: Frequency 35kHz D: Frequency 55kHz
b	Taping direction	S: Refer to PKG file N: Refer to PKG file

ELM900 x - x
 ↑ ↑
 a b

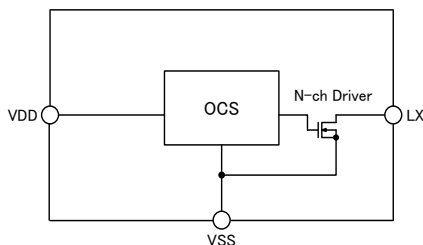
■ Pin configuration

SOT-89 (TOP VIEW)



Pin No.	Pin name
1	VSS
2	VDD
3	LX

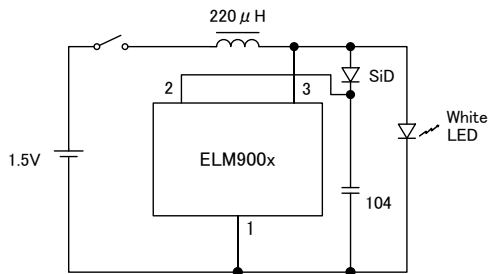
■ Block diagram



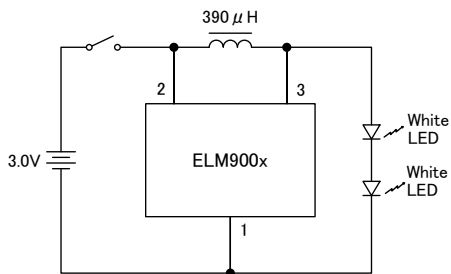
ELM900x CMOS White LED flashlight driver

■ Application circuit

1cell 1LED



2cell 2LED

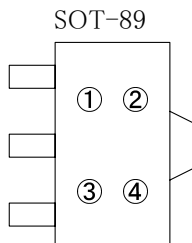


■ Electrical characteristics

Top=25°C

Parameter	Symbol	Condition	Min.	Typ.	Max.	Unit
Power voltage	Vdd		1.0		5.0	V
Current consumption	I _{ss}	Vdd=3.0V		7.0	14.0	μA
Output current of LX pin	I _{lx}	Vdd=3.0V	90.0			mA
Leakage current of LX pin	I _{lxl}	Vdd=LX=6.0V			1.0	μA
Oscillation frequency : 35kHz	F _{osc}	Vdd=3.0V	22	35	55	kHz
Oscillation frequency : 55kHz			35	55	75	
Duty ratio:switching 35kHz	Duty	Vdd=3.0V	45	55	65	%
Duty ratio:switching 55kHz			45	55	75	

■ Marking



No. ①, ② : Product IC code
90

No. ③ : the assembly lot No.1

Products	Lot No.
ELM900B	0~9
ELM900D	A~Z (I, O, X expected)

No. ④ : the assembly lot No.2

Products	Lot No.
ELM900B	A~Z (I, O, X expected)
ELM900D	0~9